

M

ORCHID

S

newsletter



A newsletter for the members of the Maryland Orchid Society

June 2009

president's message

Lately life has been preventing my doing things that I'd rather be doing, so no long-winded message this month. (This could be my most popular one yet.) I look forward to seeing most of you at this month's meeting, especially considering that it will be the last one before our summer hiatus. I hope that isn't disappointing news for our newer members. If it is, we pick up again in September. Look for e-mail announcements during the summer break, if only for the

quarterly Board of Trustees meeting in July. But I expect other orchid-related activities will present themselves too. For those whom I miss in June, have a great summer, grow those orchids, and stay in touch.

Gary

Glen Decker to Speak at June Meeting

Glen Decker began growing orchids at the age of 15 and holds the degree of Associate in Applied Science in Ornamental Horticulture. Glen is presently the owner of Piping Rock Orchids in Galway New York. He was the previous chair of the American Orchid Society's Publications Committee and is presently a Director of the Orchid Digest Corporation. Glen has won numerous AOS awards, including the Butterworth Prize, Nax Trophy, WW Wilson Award and the Carlyle A. Luer Award. He has appeared in Martha Stewart's Better Living Magazine and on a PBS TV special "Orchid Delirium". He



recently rewrote the Slipper section of the Brooklyn Botanic Garden's "The Best Orchids for Indoors" and was the technical editor for the "Orchids for Dummies" book.

Glen will be speaking on "*Phragmipediums* and Their Culture". According to Glen, "the first half is a complete look into the growing of *Phragmipediums*, including pests and diseases, repotting and everything else you can think of. The second half discussing the species and their influence in their hybrids and a look at some of those hybrids."

Fishing Creek Field Trip!

Eric Wiles is organizing a trip to the Fishing Creek Orchids greenhouse on July 18, 2009. The Fishing Creek tour starts at 11:00 am and Fishing Creek will be offering a 20% discount on all orchids for sale on that day to attendees. For more information contact Eric Wiles at winvet88@yahoo.com. More about this will be in upcoming e-mails to members.

Other Summer Events

Also, don't miss the 12th Annual Orchid Fest at Parkside Orchids on July 25 and 26.

INSIDE

2 May Show Table
2 Judges' Choice

3-4 Orchid Glossary
6 June's Education Corner Features Deflasking

show table-may 2009

by Tom McBride

Novice

1. *Phal.* Hybrid - Janice Mazur
2. *Epi.* Green Hornet - Suzanne Gaertner

Home Grown

1. *Paph. philippinense* 'Harford's Ribbons' - Mark Robbins
2. Tie *Phrag.* Bel Croute - The Lundys
Phrag. (Grande X *wallisii*) - John Dunning
Milt. Lennart Karl Gotting - Bill Scharf
3. *Den.* (Uniwai Royale X Wee Wonder) - Marilyn Lauffer

Greenhouse Under 200 Square Feet

1. *Paph.* Lady Isabel - Lou Vadorsky
2. *Phal.* Brother Purple X Dtps. Brother Love Rosa - Les Kirkegaard
3. *Lc.* Irene Finney - Barbara Buck

Greenhouse Over 200 Square Feet

1. *Bulb.* Wilbur Chang - The Adamses
2. *Max.* *tenuifolia* - Cy Swett

Cattleya

1. *L. purpurata* var. *striata* - The Adamses
2. *Lc.* Hauserman's Firewings 'Pegasus' - Michael Moran
3. Tie *Blc.* Yen Corona 'Green Genie' - Joan Roderick
C. Carol Ackerson - Barbara Buck

Phalaenopsis

1. *Phal.* Sierra Gold 'Suzanne' FCC/AOS - Chris Zajac
2. Tie *Phal.* Pride of Ben Yu - The Adamses
Phal. Arizona Gem 'Satin' - John Dunning
3. *Phal.* Hybrid - Sarah Spence

Oncidium

1. *Milt.* Andrea West 'Harford's Wei' HCC/AOS - Bill Scharf
2. *Milt.* Bert Fields 'Leash' - John Dunning
3. *Dgmra.* Flying High 'Stars & Bars' - Chris Zajac

Paphiopedilum and Phragmipedium

1. *Paph.* Prince Edward of York 'Tomcat' AM/AOS - Mark Robbins
2. Tie *Paph.* (William Ambler X St. Swithin) - The Adamses
Paph. Bel Royal - John Dunning
3. Tie *Paph.* Bel Royal - Jamie Riegel
Paph. Berenice - The Lundys

Miscellaneous Hybrids

1. *Ren.* (*monachica* X *matutina*) - Eric Wiles
2. *Den.* Love Memory 'Fit' - John Dunning
3. *Dctm.* Pulcherrimin - The Adamses

Species

1. *C. schilleriana* var. *corulea* 'Loch Raven' - The Adamses
2. Tie *Prom. xanthina* - David Smith
Den. eximium - Cy Swett
3. Tie *Paph. delenatii* - Bill Scharf
Bulb. falcatum - Eric Wiles

Miniature

1. *Sppm. rapax* - Bill Scharf
2. *Pths. griesebachiana* - David Smith
3. *Aergs. citrata* - Sue Spicer

First Bloom Seedling

1. *Paph.* Susan Booth - John Dunning
2. *Paph.* Ho Chi Minh 'Dusky Rose' - Clark Riley
3. *Den. macrophyllum* - The Adamses

Fragrance

1. *Phal.* Orchid World - Phuong Tran & Rich Kaste
2. *Lyc. aromatica* - Marilyn Lauffer
3. *Onc.* Sharry Baby 'Sweet Fragrance' AM/AOS - The Lundys

The Judges Choice of the Evening was *Paph.* Prince Edward of York 'Tomcat' AM/AOS, exhibited by Mark Robbins. The judges were Patti Kelt, David Smith and Howard Eskildson. We had a total of 161 beautiful plants displayed on our BREATHTAKING show table this month!

know it all!

This column features the MOS' Judges' Choice plant for the previous month. In May Mark Robbins' *Paphiopedilum* Prince Edward of York 'Tomcat' was awarded the honor. Following is Mark's description of how he grows his plant:

“ I purchased a compot of *Paphs.* back in 1997. They were from a cross made by the Orchid Zone, and it had just been discovered that the plants were not *sanderianum* but Prince Edward of York. As a result I got a great deal, \$20 for a compot. Many of the siblings of the plant on the show table have gone to other members of the Maryland Orchid Society. I kept three plants from the compot. One has never bloomed, one bloomed relatively early, but has smaller flowers. The third plant, 'Tomcat', received an 82 point AM from the American Orchid Society in 2005. Its petals were a bit dried out, or it might have done better.



Photo by Mark Robbins

I grow the plant under a mixture of high intensity and fluorescent light. I usually vary day length from 16 hours in the summer to 12 hours in the winter, but am trying shorter summer days because of the high temperatures in my basement. My *Paphs.* are all in a mixture of coconut husk, coarse perlite and charcoal, but the plant did fine in bark before I switched. The mix dries in 5-6 days and I try to fertilize every third watering, rotating through different fertilizers. ”

Basic Orchid Glossary

Often when I am speaking with a fellow orchid lover or listening to a speaker, they seem to be conversing in Klingon. Now, here is a handy dictionary of basic orchid-related terms so you know exactly what they are talking about.

The following is reprinted from the American Orchid Society Web site. www.aos.org

Though by no means a comprehensive glossary listing, below you will find a basic orchid glossary.

adventitious bud

Meristem originating from a single cell or group of cells not part of preexisting meristem.

adventitious propagation

The use of tissue culture to produce whole plants from adventitious buds. Can lead to high levels of somaclonal variation, unlike micropropagation.

aerial root

Any root produced above the growing medium.

anther

The part of the stamen containing the pollen; the end of the column.

axillary bud

Preexisting meristem within the axil of a leaf that is normally inactive in growth.

backbulb

An old pseudobulb behind the part of a sympodial orchid that is actively growing. Although there may be no leaves the presence of undamaged "eyes" is a sign that growth is possible.

bifoliate

Having two leaves.

cane

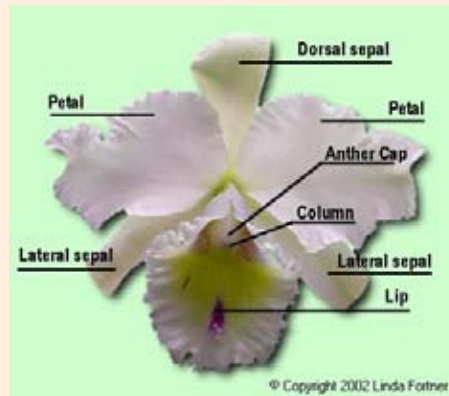
An elongated pseudobulb, usually used when describing Dendrobiums.

crock

Small pieces of broken earthenware or flower pots, placed in the bottom of a pot when repotting to aid in drainage.

cultivar

An individual plant and its vegetative propagations in cultivation; a horticultural variety.



Anatomy of a Cattleya

diploid

A plant with two sets of chromosomes. The normal condition.

epiphyte, epiphytic

A plant which naturally grows upon another plant but does not derive any nourishment from it. Many of the orchids in cultivation are epiphytic.

eye

The bud of a sympodial orchid that will eventually develop into a new lead.

foliar spray

Many minor nutrients and trace elements beneficial to growth are best absorbed through the stomata of an orchid's leaves when mixed with water and sprayed on the plant.

genus (pl. genera)

A natural grouping of closely related species.

habitat

The type of place in which a plant normally grows.

hybrid

The offspring of a cross between species or hybrids.

inflorescence

The flowering portion of a plant.

intergeneric hybrid

A hybrid between members of two or more genera.

keiki

A Hawaiian word referring to a baby plant produced asexually by an orchid plant, usually used when referring to Dendrobiums or Vandaceous orchids.

lead

An immature vegetative growth on a sympodial orchid that will develop into flower-producing structure.

lip

A modified petal of the orchid flower specialized to aid in pollination and different than the other petals.

lithophyte

An orchid that grows on rocks.

medium

The material in which an orchid is container-grown, it may be organic such as fir bark or inorganic such as lava rock.

mericlone

A plant derived from tissue culture that is identical to its parent.

meristem

The actively growing area of the plant from which mature tissues such as leaf, stems, flowers and roots originate.

micropropagation

The use of tissue culture to grow inactive axillary buds into whole plants with very little somaclonal variation, unlike adventitious propagation.

monopodial

Orchids which grow upward from a single stem producing leaves and flowers along that stem.

Continued on next page

Basic Orchid Glossary Continued from page 3

node

A joint on a stem or pseudobulb from which a leaf or growth originates.

panicle

An inflorescence with a main stem and branches, the flowers on the lower branches open earlier than the upper ones.

photosynthesis

The process a plant uses to produce carbohydrates and sugar from water and carbon dioxide in the air using chlorophyll-containing cells exposed to light.

polyploid

A plant with more than the normal two sets of chromosomes.

pseudobulb

A thickened portion of the stem of many orchids functioning as a water and food storage device.

raceme

An unbranched inflorescence of stalked flowers.

rhizome

A root-bearing stem of sympodial orchids that progressively sends up leafy shoots.

scape

An unbranched inflorescence with one flower.

sheath

A modified leaf that encloses an emerging inflorescence or leaf.

somaclonal variation

Genetic variants arising from tissue culture.

species

A kind of plant that is distinct from other plants.

spike

An unbranched inflorescence of unstalked flowers.

stem propagation

See micropropagation.

stolon

A branch that grows horizontally above the medium and produces roots and shoots at the nodes.

stomata

The breathing pores on the surface of a plant's leaves.

sympodial

Orchids which grow laterally and produce leafy growths along a rhizome.

terrestrial

Growing on the ground and supported by soil.

tetraploid

A plant with four sets of chromosomes. A normal plant is diploid with two sets of chromosomes. Most modern complex orchids hybrids are tetraploid. Compared to diploids, tetraploids general have larger, fuller and heavier subtended flowers.

tissue culture

The technique of culturing cells on a sterile synthetic media. There are two general methods use to propagate plants -- micropropagation and adventitious propagation.

unifoliate

Having one leaf.

velamen

The thick sponge-like covering of the roots of epiphytic orchids which helps prevent water loss and aids in absorption.

virus

A type of infectious agent, much smaller than common microorganisms, several forms of which affect certain kinds of orchids.

orchid calendar 2009

Date: 18 June
Event: Maryland Orchid Society Meeting
Location: First Christian Church, 5802 Roland Avenue, Baltimore, MD 21210
Time: Show table 7:30 PM; Meeting at 8:00 PM
Details: www.marylandorchids.org
Last meeting until September!

Date: 21 June
Event: National Capital Orchid Society Meeting
Location: U.S. National Arboretum, 3501 New York Ave NE, Washington, DC 20002
Time: 12:30 PM – 4:30 PM
Details: www.ncos.us/ncos/meetings.htm

Date: 21 June
Event: Susquehanna Orchid Society Meeting
Location: Giant Supermarket, 3301 Trindle Rd, Camp Hill, PA
Time: 1:30 PM
Details: www.susquehanna-orchid.org

Date: 4 July
Event: National Capital Judging Center Judging Session
Location: U.S. National Arboretum, 3501 New York Ave NE, Washington, DC 20002
Time: 12:30 PM
Details: www.nationalcapitaljc.org/index.html

Date: 16 July
Event: MOS Board of Directors Meeting
Location: Margaret and David Smith's home
Time: Light fare at 6:30 pm. Meeting begins at 7:00 pm
Details: All MOS members are welcome to attend

Date: 17 September
Event: Maryland Orchid Society Meeting
Location: First Christian Church, 5802 Roland Avenue, Baltimore, MD 21210
Time: Show table 7:30 PM; Meeting at 8:00 PM
Details: www.marylandorchids.org
First meeting of the fiscal year!

*Wear this beautiful
Orchid Pin with pride...*



Size is
1½ inches in diameter

Material is a
pewter base
with a faux rhodium
finish

*... and Thank You for supporting the
American Orchid Society with your purchase!*

This beautiful pin makes a wonderful gift and can be worn and enjoyed by any orchid lover! Offer them to your club members, give them as awards, present them in recognition of service by your club officers---or give them to the orchid lovers in your life! Most of all ---wear them to show your support of the AOS and your involvement in our amazing orchid community!

Thank You to Dawn Vertrees, www.dawnvertrees.com, award winning orchid jewelry artist, for her original design and assistance in manufacturing.

Cost: \$25 (includes shipping & handling)

(Pin comes with a converter shown above to wear as an attractive necklace)

To Order by Mail (Credit Card or check)

Mail this form to

The American Orchid Society
16700 AOS Lane
Delray Beach, FL 33446-4351

Include:

Name: _____
Address: _____
City, State, Zip: _____
Telephone: (____) _____
e-mail: _____

Credit Card Information:

MC VISA AMEX

Name on Card: _____
Card #: _____
Expiration Date: _____
Signature: _____

Number of Pins Ordered: _____ x \$25 = \$ _____

Shipping & Handling: Included in purchase price.

Shipping Address (if different than above):

Name: _____
Address: _____
City, State, Zip: _____



To Order on line

Go to www.aos.org

Click on **SHOP**



To Order by telephone

Contact Susan Wayman
(561) 404-2031
(561) 404-2034 FAX
swayman@aos.org

SUSQUEHANNA ORCHID SOCIETY ORCHID WORKSHOPS

Sunday, June 21, 2009

Society Meeting: 1:30 - 2:00 pm

Workshops: 2:00- 4:00 pm

**Giant Food Market
3301 Trindle Road
Camp Hill, PA 17011**

Open to anyone who grows or wants to learn to grow orchids

FREE ADMISSION

Learn from experts how to be successful at caring for orchids
Topics

Potting and repotting techniques and media
Orchid Doctor: Bring your sick plants for a diagnosis
Learn about available growing supplies and chemicals
Staking techniques and preparing plants to show
Pollination techniques: Learn to make your own crosses

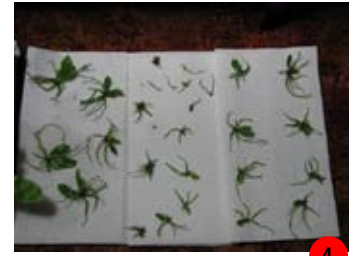
Join us for some fun and learning
Non-Members and other societies Welcome

New MOS Member

The MOS would like to welcome Robert Storm as a new member. Please greet him warmly at the next meeting.

education corner

At the June Education Corner, David Smith will demonstrate deflasking and making a compot. Raising seedlings is an easy, inexpensive way to increase the size of your orchid collection and can offer many surprises. Orchids in flask may be shipped across international borders with little or no paperwork, so being willing to deflask seedlings greatly increases your possible sources of orchids. Please don't miss this very interesting seminar.



{Photos borrowed from "altair" from the gardenweb.com Web site.}

Maryland Orchid Society

Officers

President

Gary Smith
410-374-5811
garysmith@qis.net

Vice-President

Bill Scharf
717-244-3695
willworks@hughes.net

Treasurer

Patti Kelt
410-727-0327
pkelt@comcast.net

Controllor

Lee Lundy
410-366-9365
llundy@TydingsLaw.com

Secretary

Sarah Spence
410-243-3377
slspence@comcast.net

Past President

Ann Lundy
410-366-9365
annlundy@verizon.net

Directors

Steve Adams
410-287-0149
atriversend@comcast.net

Don Forester
410-877-3764
dforester@towson.edu

Committees

Auction
Bill Ellis
410-549-1530
billellis@ellislist.com

Away Shows

Valerie Lowe
410-335-3522
vlowe14@comcast.net

Education/Activities

Eric Wiles
410-635-6023
winvet88@yahoo.com

Show

Bill Scharf
717-244-3695
willworks@hughes.net

Sunshine

Hilda Sukman
410-332-1532
hrks1931@msn.com

House

Bill Soyke
410-444-5465
Wsoyke@comcast.net

Library

Anne Minkowski
410-323-3020
saskakempa@verizon.net

Membership

Marilyn Lauffer
jmlauffer@verizon.net

Newsletter

Laura Sobelman
410-363-1040
Sobelman1@verizon.net

Program

Currently open

Refreshments

Barbara Buck
410-551-9374
BarbaraBuck@comcast.net

Show Table

Thomas McBride
410-661-4748
orchidudes@aol.com

Hospitality

Margaret Smith
410-526-0179
fpsakes1@aol.com

AOS Representative

Valerie Lowe
410-335-3522
vlowe14@comcast.net

Webmaster

Clark Riley
410-591-9201
DrRiley@aol.com

Visit us on the Web at www.marylandorchids.org
Maryland Orchid Society
P.O. Box 5651 • Baltimore, MD 21210